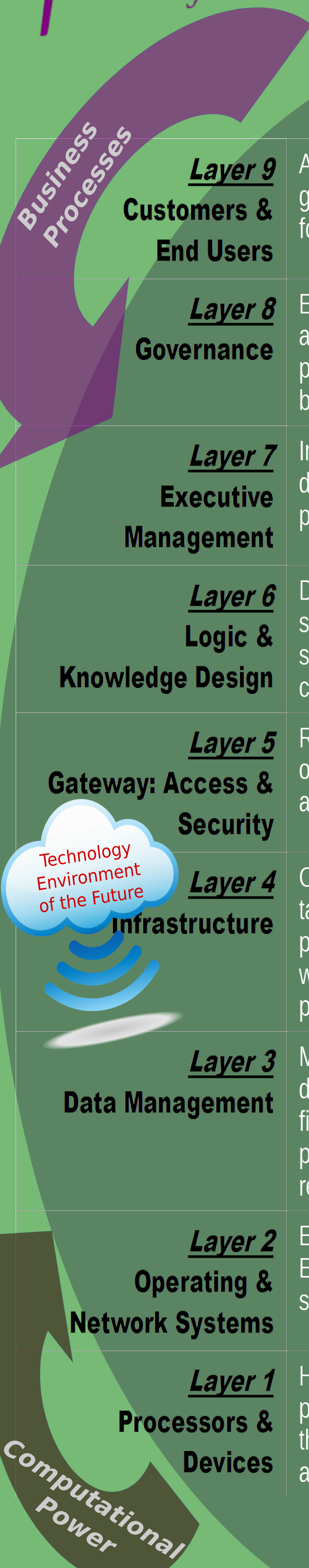


Roles & Opportunities in the 2020 Program

Leveraging Long-Term OPL Opportunities



Layer 9 Customers & End Users An organization's target audience, such as the general public, government agencies, foundations, and individuals

Layer 8 Governance Ensures the needs of customers and end users are met in the best interests of the market, the public, and the law. Outlines and approves basic strategies.

Layer 7 Executive Management Interprets and implements mandates and directives of Governance. Determines tactics, priorities, and processes.

Layer 6 Logic & Knowledge Design Describes the requirements of an organization, such as steps in processes, classification of similar items or concepts, and priorities, converting them into useful computerized form.

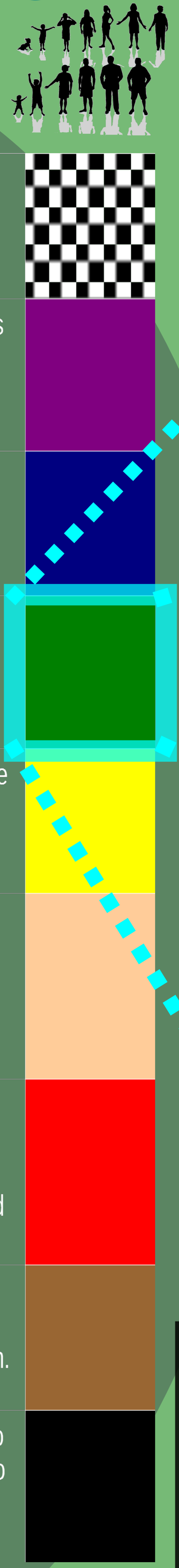
Layer 5 Gateway: Access & Security Regulates "front door" security and presents the organization to related parties, stakeholders, and others. Gateway to the system

Layer 4 Infrastructure Creates functional applications, such as taxonomy tools, that make use of other programs, such as email, desktop applications, web servers, databases, directories, and purchased software.

Layer 3 Data Management Manages file systems, databases, and directories, including hierarchical indexes, text files, documents, applications, data, user profiles, and data associated with networks and resources.

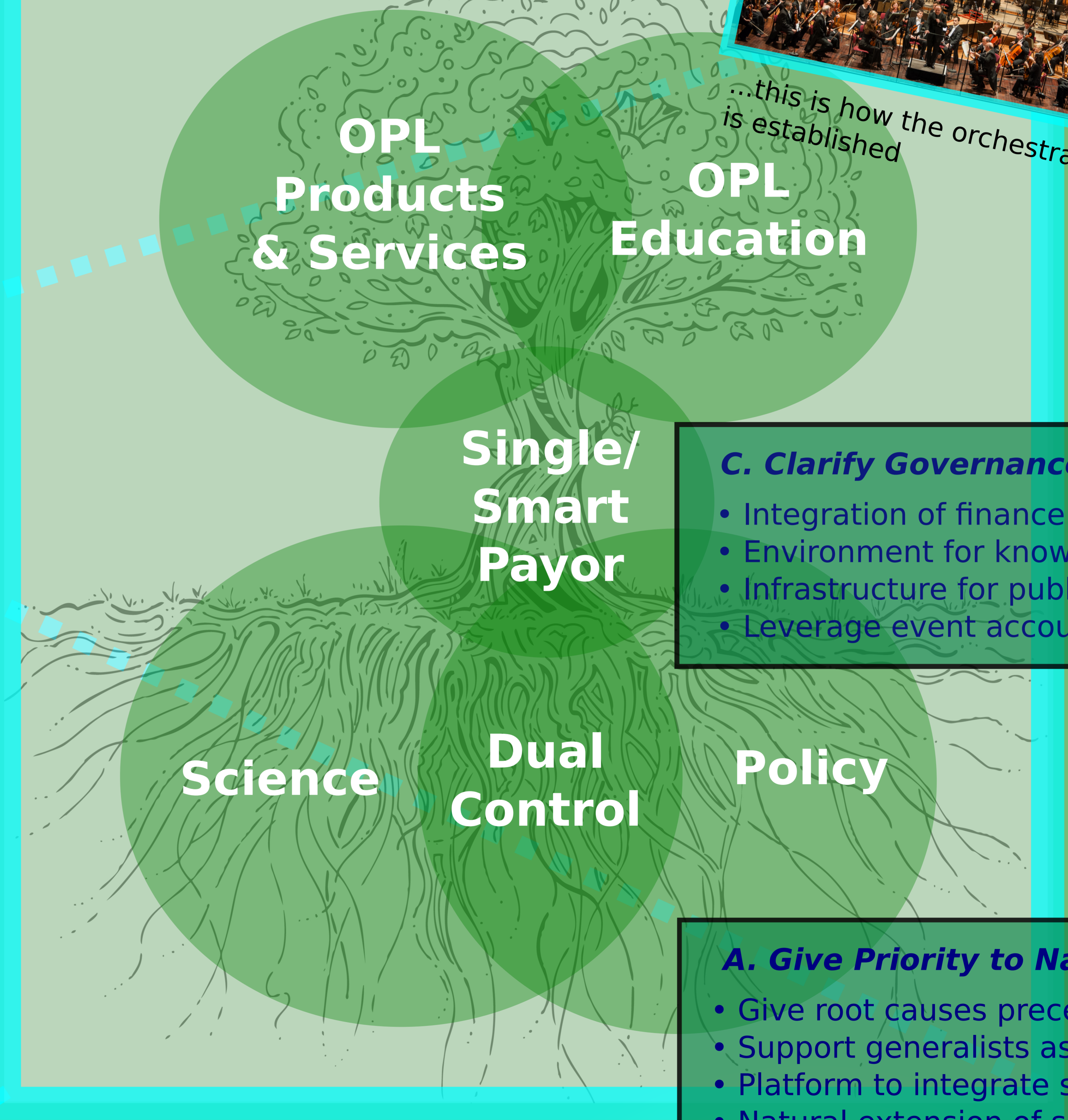
Layer 2 Operating & Network Systems Ensures the stability and security of a system. Establishes foundation for "back door" security, such as keeping hackers away from the system.

Layer 1 Processors & Devices Harnesses physical and electronic properties to provide computational power and data stores to the organizations and its network of customers and partners.



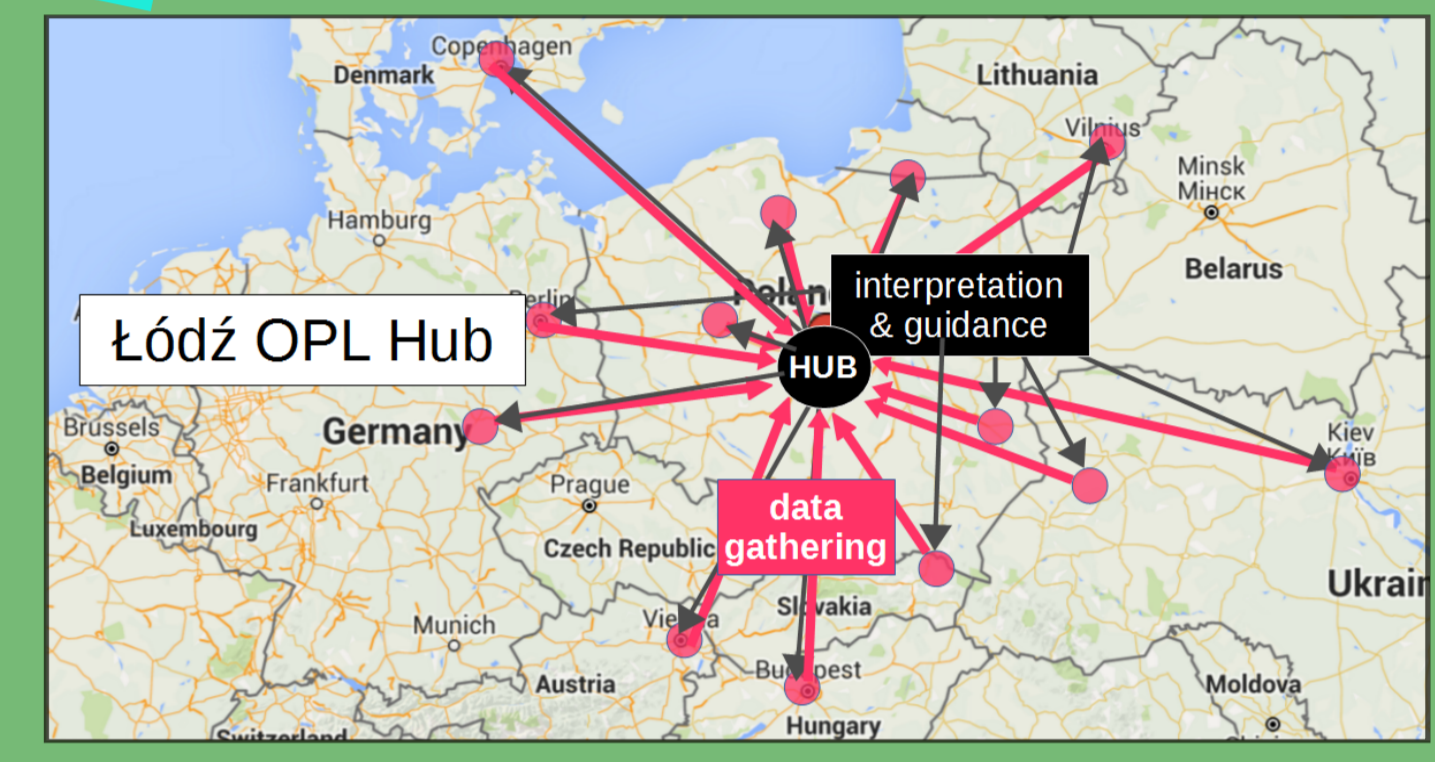
B. Define Business Processes

- Legal and regulatory requirements by country
- Clarify policy options for all circumstances
- Leverage education and marketing opportunities
- Match products and services with providers



C. Clarify Governance and Finance Models

- Integration of finance and knowledge models
- Environment for knowledge-driven finance
- Infrastructure for public-private partnership
- Leverage event accounting research



A. Give Priority to Natural Processes

- Give root causes precedence in the trees
- Support generalists as well as specialists
- Platform to integrate science and practice
- Natural extension of scientific method



D. Tame Technology Once and for All

- Secure blockchain of all process details
- Integrated accounting for all processes
- All processing power contribute to mission
- Managerial oversight over all layers
- Joint venture with technology partners w/o compromising on mission

Layer 6 Universal Logic Engine

- Integrate all processes
- Embedded in all devices
- From tacit and explicit to expressive knowledge
- Nothing "artificial" about that!

